



Welcome to
The Bromfords School and Sixth
Form College

Year 11 GCSE Information Evening

Mr Tree
Deputy Headteacher

Aims:



- To provide a brief overview of the new GCSE grading system.
- To provide guidance on how you can support your child in English, Maths and Science.
- To outline expectations of students.
- To offer suggestions on how best to support your child during this final chapter of their GCSE study.
- To provide a brief outline of the Sixth Form entry requirements.



Examinations Officer

Mrs Donna Brown

GCSE: The main changes.



- As you are probably aware the government has introduced radical new changes to the structure and assessment of GCSEs. This is to align the UK with the best education systems in the world
- A new grading scale of 9 to 1 will be used, with 9 being the top grade.
- All exams will be at the end the course.
- In **most** subjects, students will not be grouped in different ability *tiers* for the purposes of assessment – only Maths, Sciences and Languages will have different papers for different groups of students.
- There will be new, more demanding content and coursework has been removed

New 9-1 Grading System.



New grading structure	Current grading structure
9	
8	A*
7	A
6	B
5	
4	C
3	D
2	E
1	F
	G
U	U

The old and new GCSE grading scales do not directly compare but there are three points where they align, as the diagram shows:

- The bottom of grade 7 is aligned with the bottom of grade A;
- The bottom of grade 4 is aligned with the bottom of grade C; and
- The bottom of grade 1 is aligned with the bottom of grade G.

ICT Cida will be assessed on the old A*-G grading system.

BTEC Business and Sport continue with the D*, D, Merit and Pass grades.

How are targets calculated?



Students in Years 7- 11 will be set a minimum target grade based on their Key Stage 2 performance. This target grade will be shared with parents as part of a student's termly report home but can also be found on the front of each student's exercise book in all subjects.

It is based on a national formula provided by the Department for Education and is subject to change as the new 9-1 grading system develops.

KS2 Level	3	4c	4b	4a	5c	5b	5a	6
New GCSE Points	3	4	4	5	6	7	8	9
Old GCSE Grade	D	C	C	C+/B-	B/B+	A	A+/A*	A*



The importance of English and Maths

- Most employers (if not all!) will expect an individual to have met the Grade 4 boundary if they are to consider employment.
- Without both English and Maths at Grade 4, access to post-16 courses is likely to be very difficult



The Sixth Form

Headline figures



- Last year students:

Measure	2018
A*E	99%
A*-B	45%

- Results put us in ***the top 25%*** of sixth form colleges in the country

Pathways



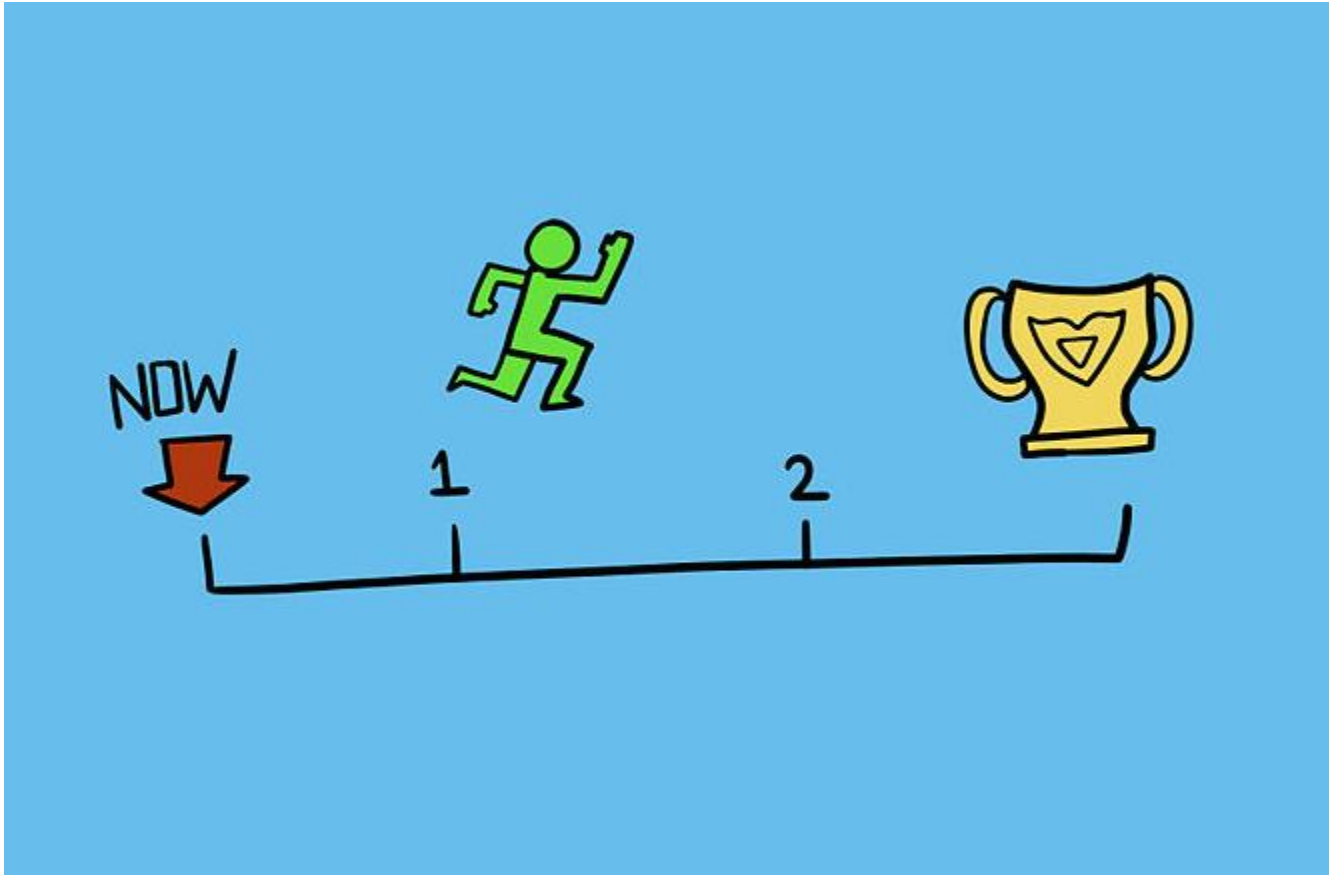
Level 3 qualifications:

- A levels
- BTEC's

Level 2 qualifications

- Bridging

Regardless of where...





Edexcel GCSE (9-1) Mathematics

Mrs Hurst
KS4 Coordinator



Maths Exam Dates

Paper 1: 21st May 2018

Paper 2: 6th June 2018

Paper 3: 11th June 2018



Though Mathematics does not change in essence

- **There is more content at both Foundation and Higher Tiers**
- **Pupils will be assessed on all subject content at the end of the Mathematics GCSE course**

Content:

	F	H
• Number	25%	15%
• Algebra	20%	30%
• Ratio, proportion, rates of change	25%	20%
• Geometry	15%	20%
• Probability and statistics	15%	15%

Assessment structure



Paper 1 33.3%	Paper 2 33.3%	Paper 3 33.3%
Non-calculator	Calculator	Calculator
80 marks	80 marks	80 marks
1 hr 30 mins	1 hr 30 mins	1 hr 30 mins

*Assessments will be linear examinations.
All papers may assess any content domains*

What can your child do?



HOMEWORK!

Name:

Date:

Year 11 HOMEWORK 1

Number

Exam Questions

1. Use your calculator to work out $\sqrt{\frac{12.71+137.936}{\cos 50^\circ \times 13.2^2}}$
Give your answer to 2 decimal places.



4

2. Express

(a) 210 as a product of its prime factors.



4

.....
(b) 105^2 as a product of its prime factors.

.....
(Total for Question 1 is 2 marks)

.....
(Total for Question 2 is 4 marks)



HOMEWORK



- Your child will be given a piece of homework every week.
- It consists of ONLY four questions, increasing in difficulty!!!
- These are mixed exam questions from past papers.
- It is a source of continuous revision through out the year.
- IT IS **ESSENTIAL** YOUR COMPLETES THESE HOMEWORKS
- IT IS **ESSENTIAL** YOUR CHILD SPEND MORE THAN 5 MINUTES IN FORM TIME COMPLETING THESE HOMEWORKS.
- Pupils should use revision resources and staff in the department to seek help if they need it.



KNOW YOUR CALCULATOR



- There are two calculator papers in the final exam.
- That is over 60% of their final available marks.
- It is essential your child gets a calculator **NOW !!!!!**
- **Your child needs time to learn how to use their calculator and its functions.**
- It will give them a better chance on the calculator paper.

REVISION



- The important thing to recognise when revising maths is that it's a discipline that depends on understanding.
- Unlike most other subjects, memorising and parroting answers isn't going to do the job.
- There are only a finite number of topics, so the best thing that you can do to prepare before the exam is to rehearse as many as possible.
- REMEMBER the best technique is to **PRACTISE, PRACTISE, PRACTISE.**
- Past papers are the obvious solution, as they are a good indicator of the standard required.
- Prioritise the questions that you frequently get wrong. Challenge yourself sooner rather than later, and do a little bit of the harder stuff every day up until your exam; you'll pick it up a lot quicker than you'd think.
- **MAKE SURE YOU KNOW WHICH FORMULAE WILL NOT BE GIVEN AND LEARN THEM**
- Plugging values into a formula is an easy way to pick up marks, so make sure you don't lose out due to lack of knowledge. The formulas are very easy to memorise. Either stick them up around your bedroom, or write them out repeatedly until they are ingrained.

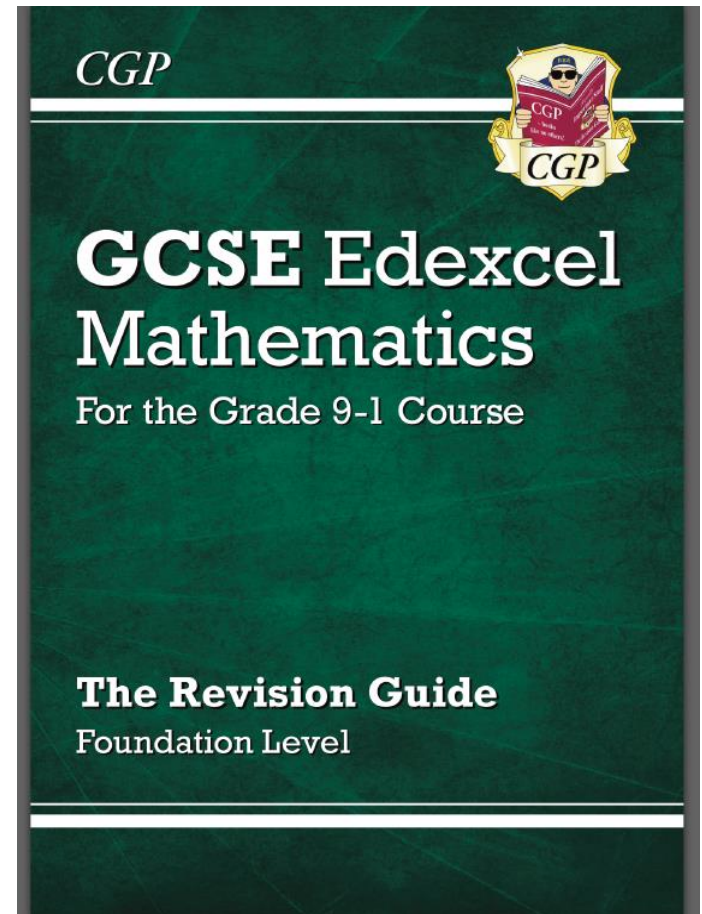
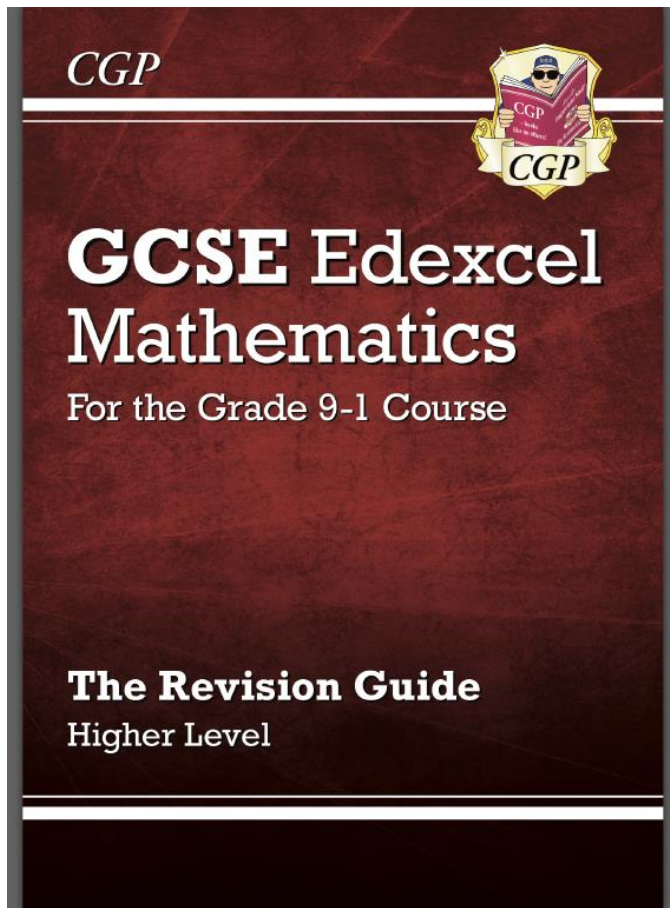
USE THE INTERNET CONSTRUCTIVELY



If you find yourself really struggling with a topic, there is plenty of help online. YouTube is a particularly useful resource in this respect:

WEBSITE	
YouTube Type in the topic you need help with.	
Pearsons Qualifications: Past papers, sample papers	https://qualifications.pearson.com/en/home.html
Hegarty Maths Lots of youtube tutorials available.	https://hegartymaths.com/
Mymaths	https://www.mymaths.co.uk/ Username: Bromfords Login: Shape
Khan Academy Lots of youtube tutorials for maths and science	https://www.khanacademy.org/
GCSE Pod	

Useful Revision Guides





Year 11 English

The all important exam dates are:



English Language

04 June 2019 am

07 June 2019 am

English Literature

15 May 2019 am

23 May 2019 am

**7 months to
go!**



Year 11 English

Students will prepare for 2 separate GCSEs

- English Language
- and
- English Literature

English Language

Students will complete two examination papers to gain this GCSE.

Paper 1 : 1 hour 45 minutes, 50% of the final grade.



Explorations in Creative reading and writing

What's assessed?

Section A: Reading

- One literature fiction extract and four questions to answer about it. (40 marks)

Section B: Writing

- One task. Descriptive or narrative writing. (40 marks)



WHAT YOU NEED TO KNOW:

- The texts can be quite challenging with lots of new vocabulary. 🤔

They came in by train from Victoria every five minutes, stepped off in bewildered multitudes into fresh and glittering air: the new silver paint sparkled on the piers, the cream houses ran away into the west like a pale Victorian water-colour; a race in miniature motors, a band playing, flower gardens in bloom below the front, an aeroplane advertising something for the health in pale vanishing clouds across the sky.

- The timings of the questions are really important to make sure all questions are answered.
- 16 marks, which is a huge amount, are awarded for technical accuracy. This means **accurate spelling, punctuation and grammar.**



WHAT YOU CAN DO AT HOME:

- Read, read and read some more! Children should be reading a range of different texts at home.
- If you don't know what books to select for your child start with **The Guardian Teenage Fiction Award** or the **Carnegie Medal winners** which you can find online. Higher ability students should also read **classic fiction like Jane Austen, Charles Dickens or Charlotte Bronte** for example.
- There are a huge number of resources online to support spelling and punctuation practice. In addition there are a number of SPaG practice books available on Amazon, Waterstones or WH Smiths. They are often aimed at younger children but it is worth practising these skills at home to reinforce learning in class.

English Language: Two Exams



Paper 2: 1 hour 45 minutes, 50% of the final grade.

Writers' viewpoints and perspectives

What's assessed?

Section A: Reading

- One non-fiction text and one literary non-fiction text

Section B: Writing

- Writing to present a viewpoint

WHAT YOU NEED TO KNOW:



- One of the sources will be 19th century non-fiction. This can be challenging to read!

Having lately received a Letter from my Son Henry, who is at Mr. Smith's School close by you, complaining of the Treatment he receives, I am induced to write to you, confidentially, to request you will do me the favour to endeavour to see both of them, privately, (at your own House) if possible and ascertain whether you think it would be advisable for me to send for them home.

WHAT YOU CAN DO AT HOME:

- More reading!
- Non-fiction and fiction.



Non-examination Assessment: Spoken Language



What's assessed

- Presenting
- Responding to questions and feedback
- Use of Standard English

Assessed

Teacher set throughout course and marked by the teacher.

Separate endorsement (0% weighting of GCSE)

English Literature

Students will complete two examination papers to gain this GCSE.



English Literature: Two Exams

Paper 1 – 1 hour 45 minutes 40% of final Literature grade.

- Shakespeare and the 19th Century novel.

What's assessed?

Section A Shakespeare:

- Students will answer one question on Macbeth by William Shakespeare. They will be required to write in detail about an extract from the play and then to write about the play as a whole.

Section B The 19th-century novel:

- Students will answer one question on A Christmas Carol. They are required to write in detail about an extract from the novel and then to write about the novel as a whole.

English Literature: Two Exams

Paper 2: 2 hours and 15 minutes. 60% of final Literature grade.

- **Section A Modern texts:** students will answer one essay question from a choice of two on “An Inspector Calls”.
- **Section B Poetry:** students will answer one comparative question on one named poem printed on the paper and one other poem from the war and conflict anthology cluster.
- **Section C Unseen poetry:** Students will answer one question on one unseen poem and one question comparing this poem with a second unseen poem.



WHAT YOU NEED TO KNOW:



- These are closed book exams, which means that students are not allowed to take copies of the books into the exam hall.
- Students are required to use details from the books in their answers. This means they must quote from the texts. These quotations can be paraphrased e.g. *Lady Macbeth asks spirits to make her more like a man*. Or they can be quoted precisely Lady Macbeth says, *'come ye spirits that tend on mortal thoughts, unsex me here.'* Or they can be embedded key words; *Lady Macbeth asks to be 'unsexed' to be more like a man*. Those aiming for higher grades should try to use precise and embedded quotations.

WHAT YOU CAN DO AT HOME:

- Learn quotations off by heart!

READ IT 10 TIMES
SPEAK IT 10 TIMES
WRITE IT 2 TIMES

Homework



- Your child will receive homework weekly.
- It's essential that this is done as it will provide vital opportunities to practice core skills.
- Teachers set homework on SHOW MY HOMEWORK which all students can access at home.

Helpful websites:



- www.bcbitesize.co.uk
- www.gcsepod.com
- <http://www.slideshare.net/> (Really good for analysing poetry!)
- <http://www.englishbiz.co.uk/>
- <http://www.revisioncentre.co.uk/gcse/english/>
- **Lit app!**

Revision texts



English Language



Everything students need for success in the new English Language exams!

Text Guides & Plays



Now with brand new Workbooks to match our most popular Text Guides

English Literature & Poetry



Superb Poetry Guides, new Poetry Workbooks and much more!

Spelling, Punctuation & Grammar



Hone those all-important SPaG skills with our unbeatable range!



Head of Upper School

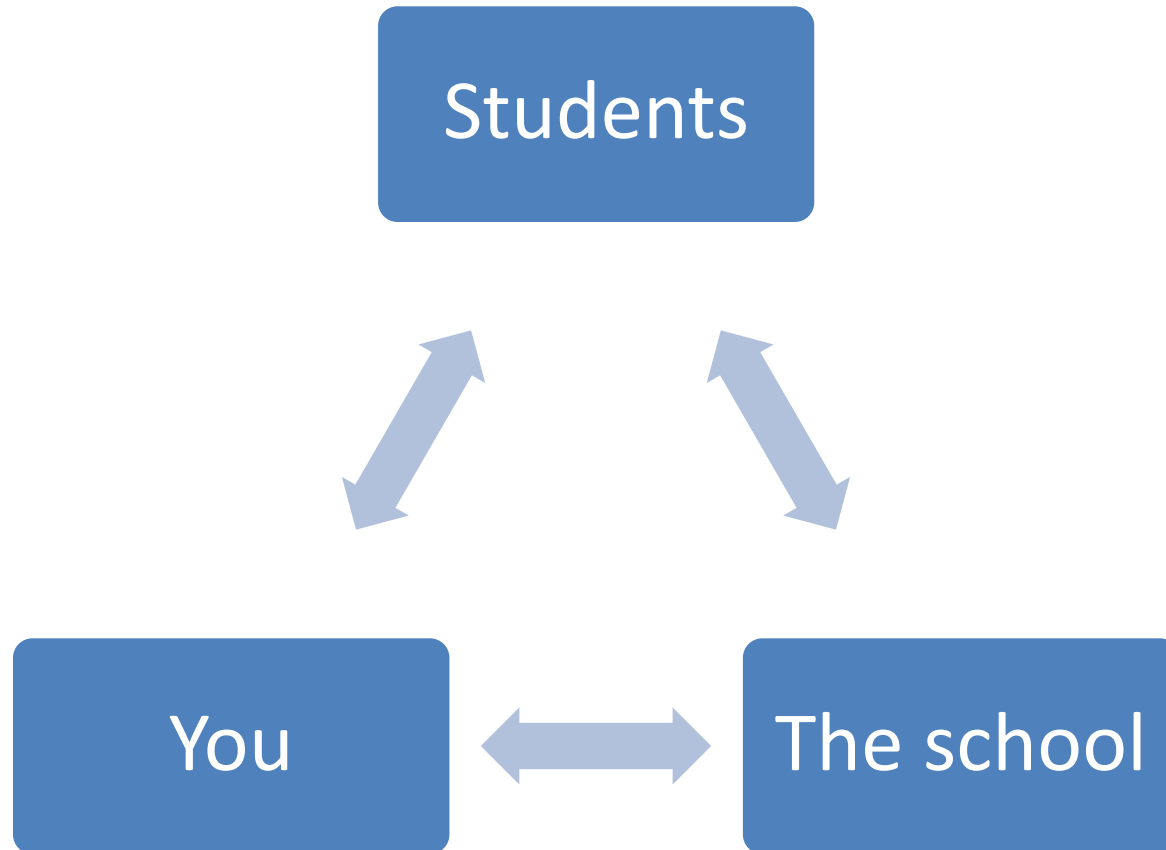
Miss Emma Huet

Aims for the school:



- Ensuring success for all
- Raising aspirations
- Un-locking potential
- Supporting students to believe they can achieve.

How is success achieved?



How to support: Homework

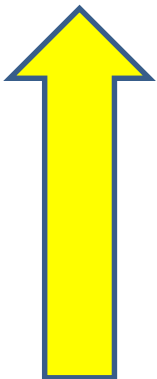


12th - 18th May, 2014

All Teachers All Subjects All Classes All Years

All Homework Exam Class Test Quiz Take Away Homework Deadlines

Monday 12 May	Tuesday 13 May	Wednesday 14 May	Thursday 15 May	Friday 16 May	Saturday 17 May
7a/Gg2 Geography Mr. M. Goodlad	7.8/In RE Mrs. E. Rainey	81/Ma1 Mathem... Miss. P. Bloxham	7.3/Sc Science Miss. J. Turner	7.4/Re RE Mrs. J. Edwards	
7a/Dt5 Food T... Mrs. D. Place	7.2/Re RE Mrs. J. Edwards	81/Gg3 Geography Mr. M. Goodlad	7.6/Re RE Mrs. J. Edwards	7.1/It ICT Mr. D. Sims	
71/Dt5 Food T... Mrs. D. Place	7.1/Re RE Mrs. J. Edwards	8a/Gg2 Geography Mr. M. Goodlad	7.4/It ICT Mr. D. Sims	7.5/Ar Art an... Mrs. C. Chiddicks	
7.6/Mu Music Mrs. L. Hudson	7.1/Re RE Mrs. J. Edwards	8.2/Ar Art an... Mrs. C. Chiddicks	71N/Su English Miss. K. Wood	7.1/Hi History Mr. R. Altman	
71/Gg4 Geography Mr. T. Marshall	7.3/It ICT Mr. D. Sims	81/Gg4 Geography Mr. T. Marshall	7AN/Su English Miss. K. Wood	7.4/Hi History Mr. A. Russell	



Go to The Bromfords website, click on the "Show my homework" icon.

How to support: Attendance

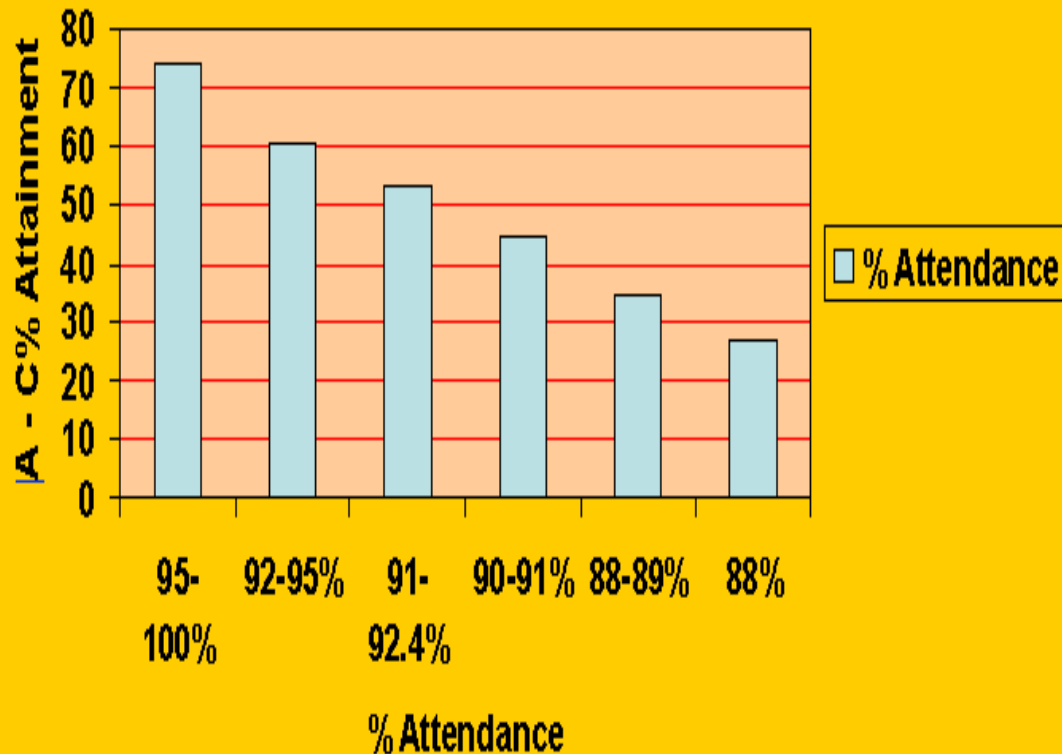


90% attendance = ½ day missed every week!!

Over a school year this is 4 weeks – 100 lessons lost

17 missed school days could mean they achieve a whole GCSE grade lower.

Chances of Success at GCSE



How to support: Revision/Exam Preparation.



Starts NOW!

Buy revision guides

Revision tips and guidance will be given to all pupils in form time and subject lessons.

Contact us if you have any other questions or concerns.

**VITAL FOR
SUCCESS IN
EVERY
EXAM!!**

How to support: Revision/Exam Preparation



Date:	Monday	Tuesday	Wednesday	Thursday	Friday	Saturday	Sunday
8am-9am							
9-10am							
10-11am							
11-12am							
12-1pm							
1-2pm							
2-3pm							
3-4pm							
4-5pm							
5-6pm							
6-7pm							
7-8pm							
8-9pm							
9-10pm							

**Create a
revision
timetable
and stick to
it!**



Kinaesthetic (Do It)

Jot down key words, draw pictures using a clip board, white board, big pieces of paper

Games such as matching key words and phrases

Post-it notes

Acting it out!

General

GCSE Pod

Brainstorm using a spider diagram

Write out, compare to your notes, repeat

Key words on post-it notes around the house

Put notes on revision cards/flash cards

Mind map/flow charts /timeline

List two sides of an argument

Create a dictionary for each subject

Fill the bedroom walls with posters

Visual (See It)

Colour coding/highlighting

Mind map

Flash cards

Flow charts

Read and then rewrite key words/phrases

Auditory (Hear It)

Reading aloud

Ask questions

Talk aloud/record your revision

Funny rhymes/songs

Discuss/debate topics with others



How you can support at home:

- Be aware of what they are studying and what exams they have and when.
- Ensure they have all the necessary equipment and **revision guides**.
- Encourage and motivate them.
- Monitor “Show my homework” to keep them on top of homework.
- Make sure they are in school on time and ready to learn.

Stress-it will happen! (For you and them)



Potential signs of stress:

- Wants to be alone
- Has difficulties sleeping
- Loss of concentration
- Emotional
- Loss of self-esteem
- Feelings of depression
- Short tempered and snappy
- Suffer with headaches
- Refusing to complete work

Some ideas of coping strategies:

- Establish a routine and stick to it
- Keeping active
- Healthy diet
- Regular breaks
- Limiting time on social media/technology
- Build variety into the revision schedule to avoid boredom
- Do timed practice papers
- Research shows that simply talking to your child about their work can make a difference



Key Dates: Year 11

- **Sixth Form Open Evening:** Thursday 15th November 2018
- **Exam Information Evening:** Thursday 25th April 2019
- **GCSE Examinations:** Monday 13th May – Thursday 20th June 2019 and in addition a contingency day on 26th June 2019 (some subjects will have examined units prior to this)

Alongside these key dates, I will be closely monitoring student progress and will contact you if there are any concerns.



Points of Contact

Head of Year 11: Mrs Morgan

Head of Upper School: Miss Huet

Tutors

11.1: Miss Cullen

11.2: Miss Philpott

11.3: Ms Shaw/Mrs Hudson

11.4: Mr Goodlad

11.5: Ms Robinson/Mr Ruta

11.6: Mr Ford



Thank you for your support this evening.

If you have any further questions please feel free to speak to me or another member of staff before you leave.

Have a safe journey home.